

JAM

BEFORE THE BOARD OF COUNTY COMMISSIONERS
FOR COLUMBIA COUNTY, OREGON

In the Matter of Ordering That Road Improvements)
be Made to Blaha Road) Order No. 67-2004

WHEREAS, the Board of County Commissioners initiated proceedings to cause improvements to be made to Blaha Road by Resolution No. 56-2004 on July 14, 2004; and

WHEREAS, notice of the proposed improvement and opportunity to object was mailed to all effected property owners on July 21, 2004; and

WHEREAS, no written objections were received by property owners within the 20 day time period for objections; and

WHEREAS, pursuant to Ordinance No. 85-5, if no written objections are properly received from more than 50% of the property owners representing more than 50% of the total amount of assessment for the proposed improvement, the Board, may, by order, direct that the improvement be made by contract or force account;

NOW, THEREFORE, IT IS HEREBY RESOLVED as follows:

1. The Columbia County Public Works Director shall cause the following road improvement to be constructed by contract: a new 3" depth of asphalt to a width of 20 feet, and gravel shoulders on approximately 1300 feet of Blaha Road to be between the existing pavement.
2. After the road improvements have been completed, inspected by the Roadmaster and accepted by the Board, the County Roadmaster shall compile the total cost of the improvement, including any legal, administrative and engineering costs attributable thereto. The Roadmaster may add up to 15 percent of the total cost for engineering and administration. The Roadmaster shall then ascertain the amount of the assessment against the respective lots or parcels using the portion of Blaha Road to be improved, and assess an equal amount of such cost against each such specially benefitted lot or parcel.
3. The improvement shall be made to the portion of Blaha Road abutting the following tax parcels:
4212-000-2204; 4212-000-2200; 4212-000-2206; 4212-000-2208; 4212-000-2201; 4212-000-2300; 4213-0010-0903; 4213-010-0906; 4213-010-0905; 4213-010-0901; 4213-010-1000; 4213-010-1100; 4213-010-1200.
4. Each of the following tax parcels, as shown on the attached map, will be specially benefitted by the improvements to Blaha Road:

4212-000-01400; 4212-000-01500; 4212-000-01600; 4212-000-01601; 4212-000-01605;
4212-000-01606; 4212-000-01607; 4212-000-01608; 4212-000-01610; 4212-000-01609;
4212-000-01700; 4212-000-01800; 4212-000-01905; 4212-000-02204; 4212-000-02201;
4212-000-02208; 4212-000-02300; 4213-000-00101; 4213-000-00102; 4213-010-00903;
4213-010-01000; 4213-010-00905; 4213-010-00906; 4213-010-01100; 4213-010-01200;
4212-000-01200; 4212-000-00206; 4212-000-01901; 4213-010-00901; 4213-000-00100.


5. This Order, with attachments, shall be filed with the Columbia County Clerk, and shall be indexed in the County lien docket, without cost. Once this order is filed it is notice that the land described in the order is subject to a lien for an assessment for the cost of improvement in an amount to be determined by later order.

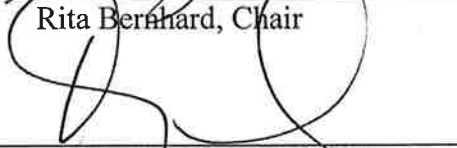
Dated this 25th day of August, 2004.

Approved as to form

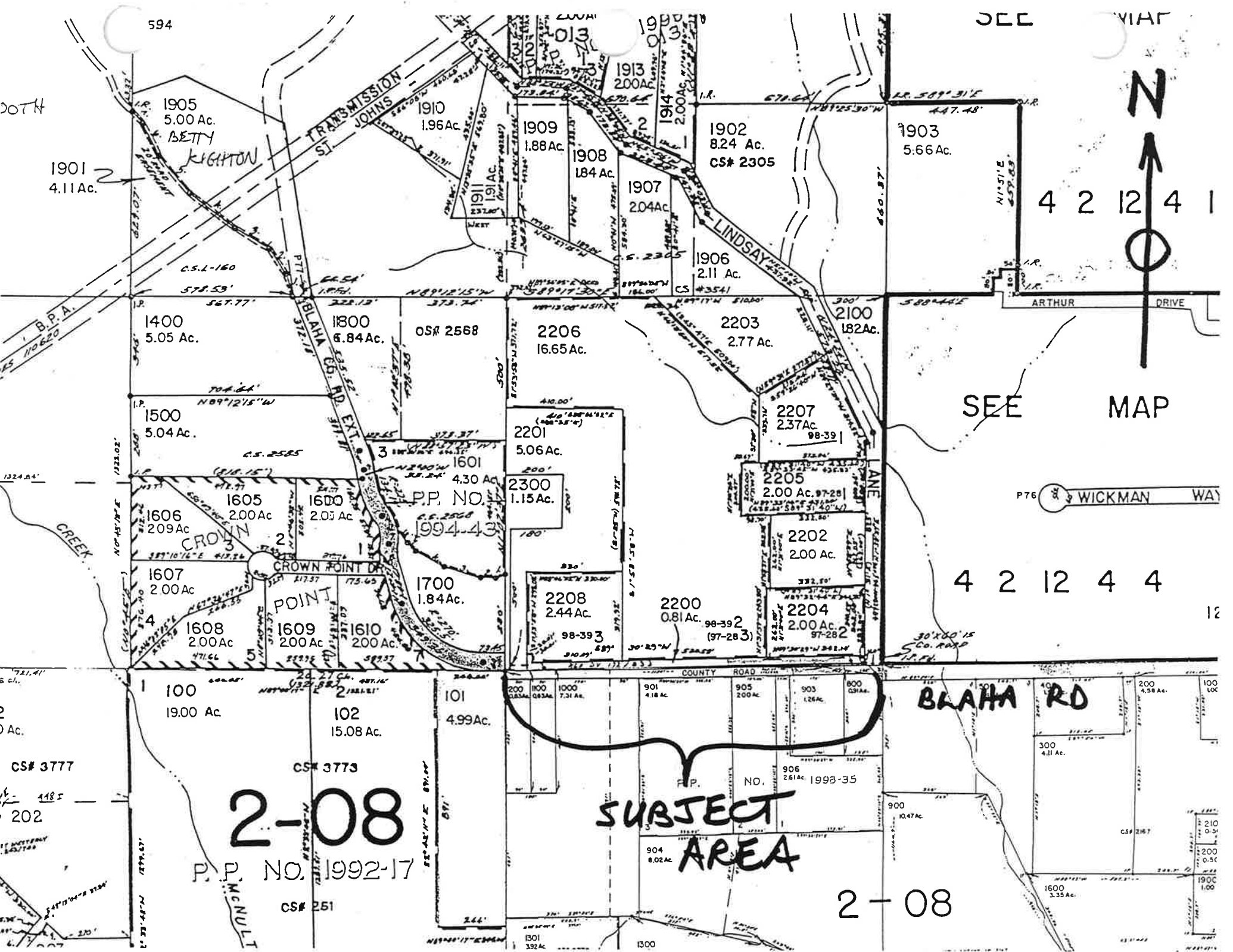
By: 
County Counsel

BOARD OF COUNTY COMMISSIONERS
FOR COLUMBIA COUNTY, OREGON

By: 
Rita Bernhard, Chair

By: 
Anthony Hyde, Commissioner

By: 
Joe Corsiglia, Commissioner



594

2074

SEE MAP



4 2 12 4 1

SEE MAP

P76 WICKMAN WAY

4 2 12 4 4

12

SUBJECT AREA

2-08

P.P. NO. 1992-17

2-08

1905 5.00 Ac. BETTY LIGHTON
 1901 4.11 Ac.
 1910 1.96 Ac.
 1909 1.88 Ac.
 1908 1.84 Ac.
 1907 2.04 Ac.
 1902 8.24 Ac. CS# 2305
 1903 5.66 Ac.
 1911 1.91 Ac.
 1914 2.00 Ac.
 1906 2.11 Ac. CS# 2354
 1400 5.05 Ac.
 1800 6.84 Ac. OS# 2568
 2206 16.65 Ac.
 2203 2.77 Ac.
 2100 1.82 Ac.
 1500 5.04 Ac.
 2201 5.06 Ac.
 2207 2.37 Ac. 98-39
 1601 4.30 Ac. P.P. NO. 1994-43
 2300 1.15 Ac.
 2205 2.00 Ac. 97-28
 1606 2.09 Ac.
 1600 2.05 Ac.
 1605 2.00 Ac.
 1607 2.00 Ac.
 1700 1.84 Ac.
 2208 2.44 Ac. 98-393
 2200 0.81 Ac. 98-392 (97-283)
 2202 2.00 Ac.
 2204 2.00 Ac. 97-282
 100 19.00 Ac. CS# 3777
 102 15.08 Ac. CS# 3773
 101 4.99 Ac.
 901 4.18 Ac.
 905 2.00 Ac.
 903 1.26 Ac.
 800 0.31 Ac.
 906 2.61 Ac. 1993-35
 900 10.47 Ac.
 904 8.02 Ac.
 1600 3.35 Ac.
 1301 3.92 Ac.
 1300